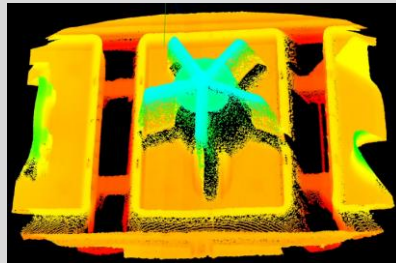
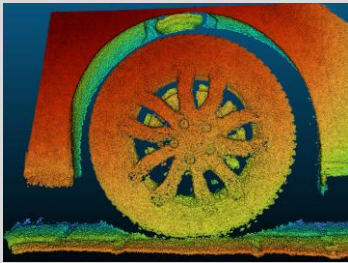




### Key advantages:

- Highest resolution industrial Time of Flight camera
- Indoor and outdoor applications
- 940nm illumination with PoE++ interface
- Blur free data on moving objects
- Cost-effective 3D solution



### 1.2 Megapixel sensor

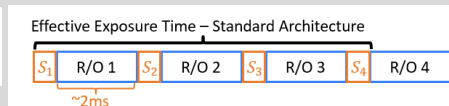
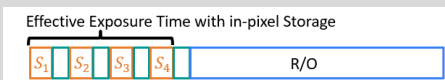
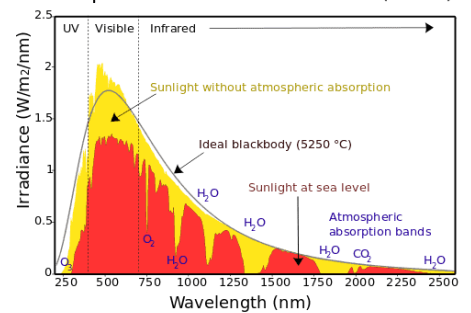
Highest resolution industrial ToF camera available offering more 3D points and the ability to visualise smaller features.

### 940nm Class 1 eye safe laser

Suitable for indoor and outdoor applications due to quiet spot in the spectral output from the sun. Only a single wavelength version is needed for in and outdoor applications.

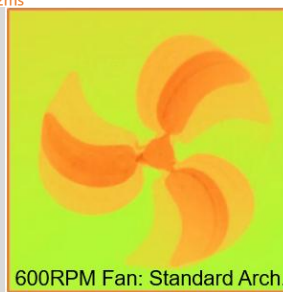


Spectrum of Solar Radiation (Earth)



### In-sensor readout and storage

For highest accuracy 4 offset exposures are taken. The in-sensor readout and storage minimises the time between exposures significantly reducing motion artefacts.



### Product facts:

- Resolution: 1280 x 960 (1.2Mpixel)
- Illumination: Class 1 940nm VCSEL
- Frame rate: 30Hz
- Accuracy: +/- 5mm @ 1m, 0.05% @ >1m
- Protection class: IP67

